



GMT MONTHLY MEMBERSHIP PROGRESS REPORT

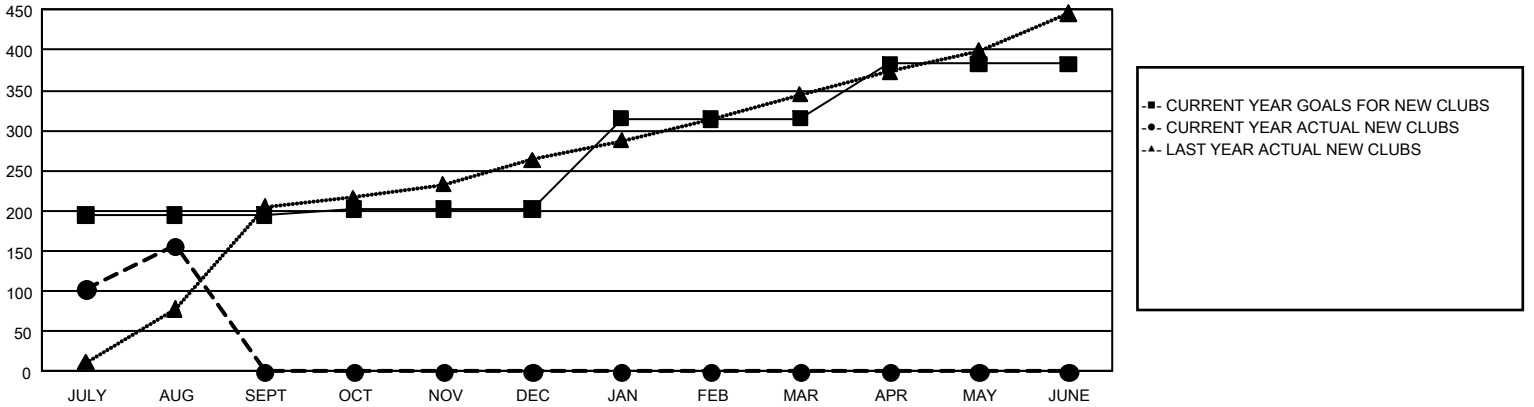
GAT Constitutional Area 6 - South Asia and Middle East

Results as of: 8/31/2024

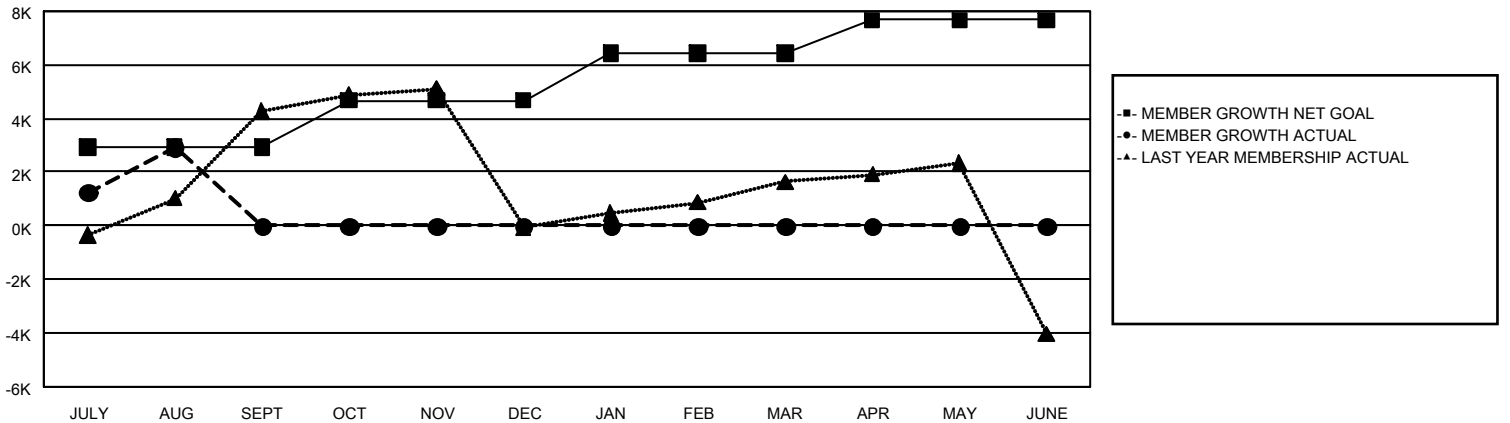
REPORT DOES NOT INCLUDE CLUBS IN UNDISTRICTED AREAS.

Clubs				Members			
RESULTS FOR 2024-2025				RESULTS FOR 2024-2025			
QUARTER	NEW CLUB GOAL	NEW CLUBS	DROPPED CLUBS	QUARTER	MEMBER GROWTH NET GOAL	MEMBER GROWTH ACTUAL	DROPPED MEMBERS ACTUAL (including transfers)
JULY/AUG/SEPT	195	157	34	JULY/AUG/SEPT	2,933	6,669	2,919
OCT/NOV/DEC	7	0	0	OCT/NOV/DEC	1,737	0	0
JAN/FEB/MAR	113	0	0	JAN/FEB/MAR	1,772	0	0
APR/MAY/JUNE	68	0	0	APR/MAY/JUNE	1,228	0	0

GOALS AND ACTUAL NEW CLUBS CUMULATIVE



GOALS AND ACTUAL MEMBERS CUMULATIVE



DROPPED CLUBS: 34	984 CLUBS OF 3,881 ADDED 1 OR MORE NEW MEMBERS	<u>GENDER DISTRIBUTION</u> MALE 65,365 (71.79%) FEMALE 25,659 (28.18%)
<u>DROPPED MEMBERS</u> DECEASED 21 CLUB CANCELLED 445 OTHER 2,437 <hr/> TOTAL 2,903	CLICK HERE FOR CUMULATIVE MEMBERSHIP DATA	TOTAL FAMILY UNIT MEMBERS 47,931 FAMILY MEMBERS PAYING HALF DUES 32,736